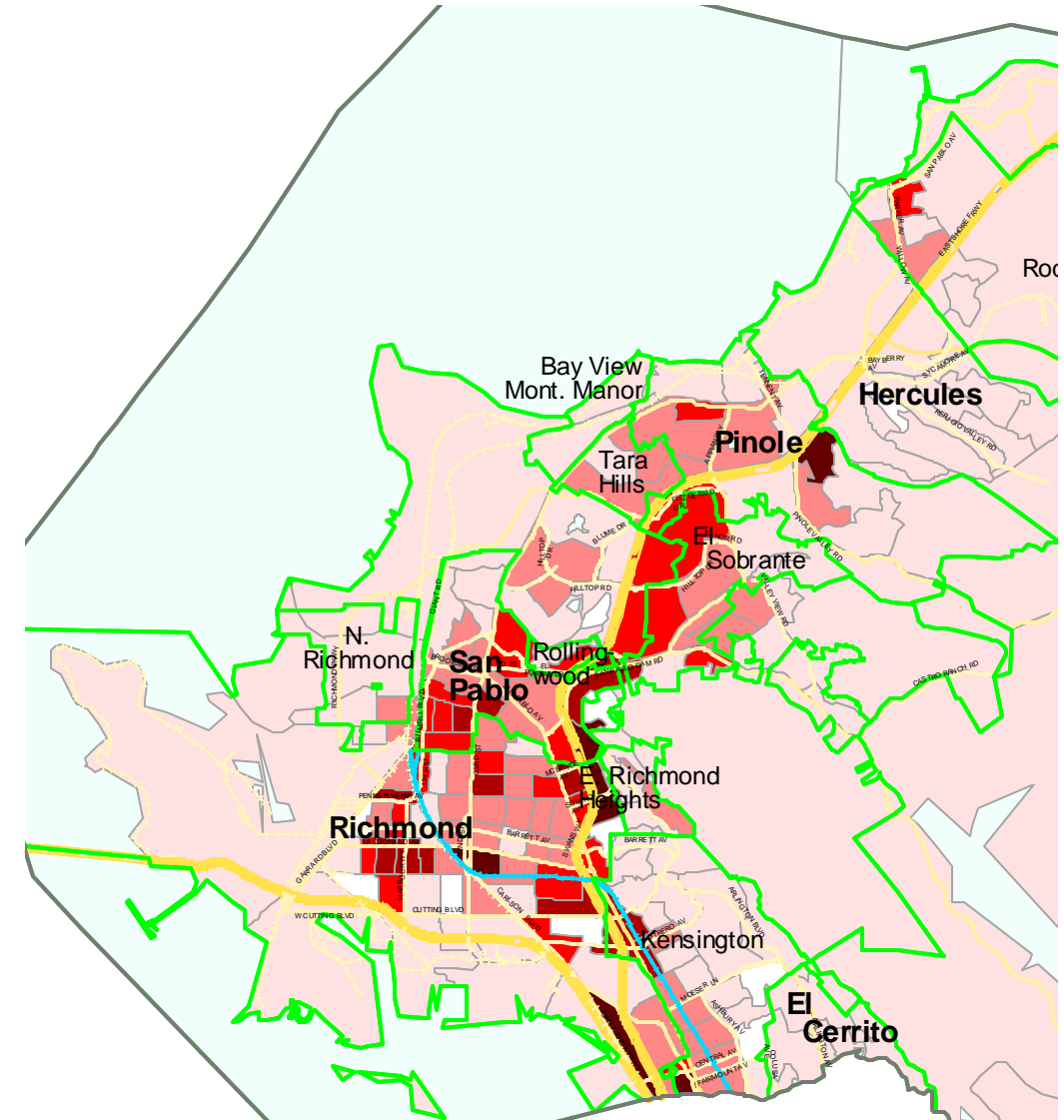
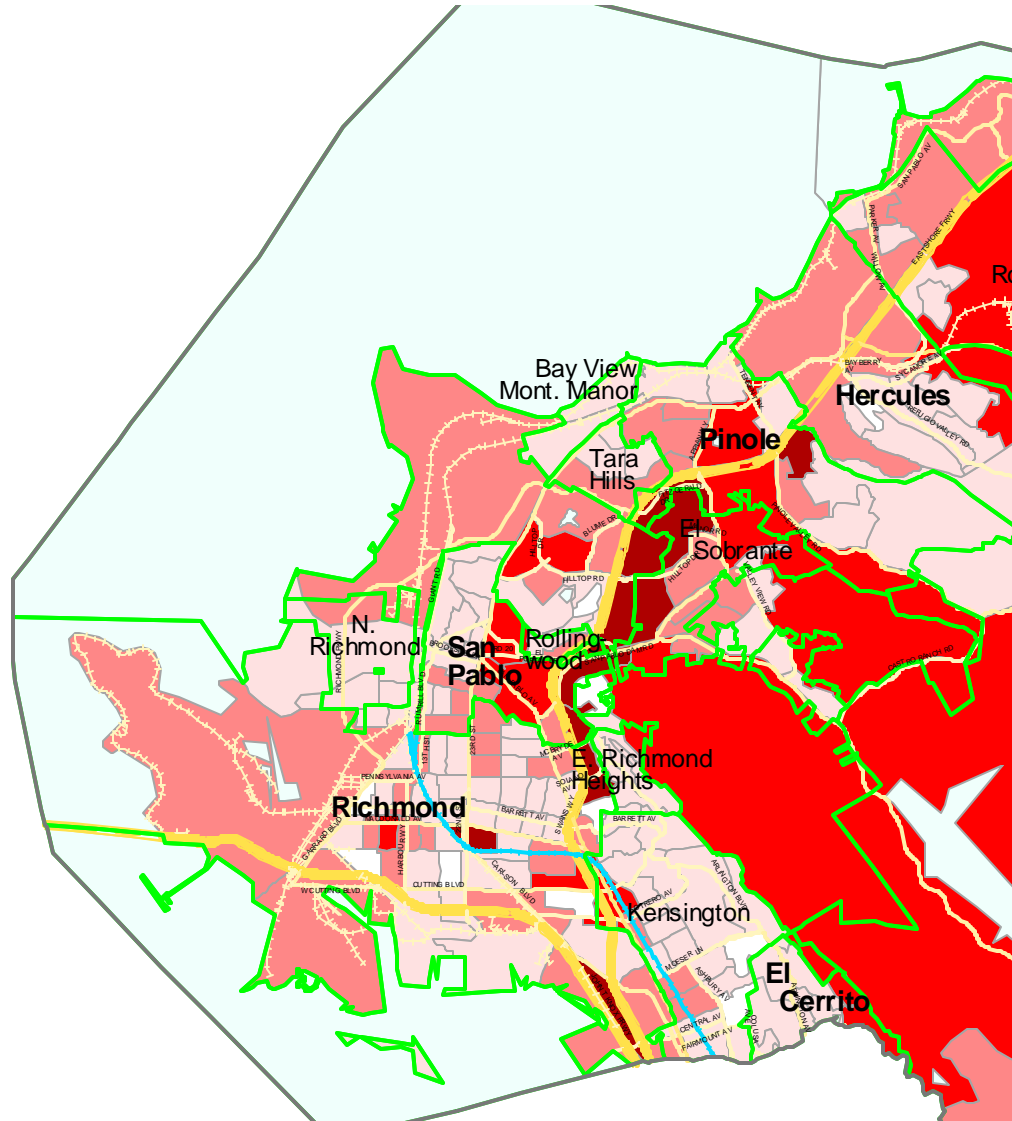
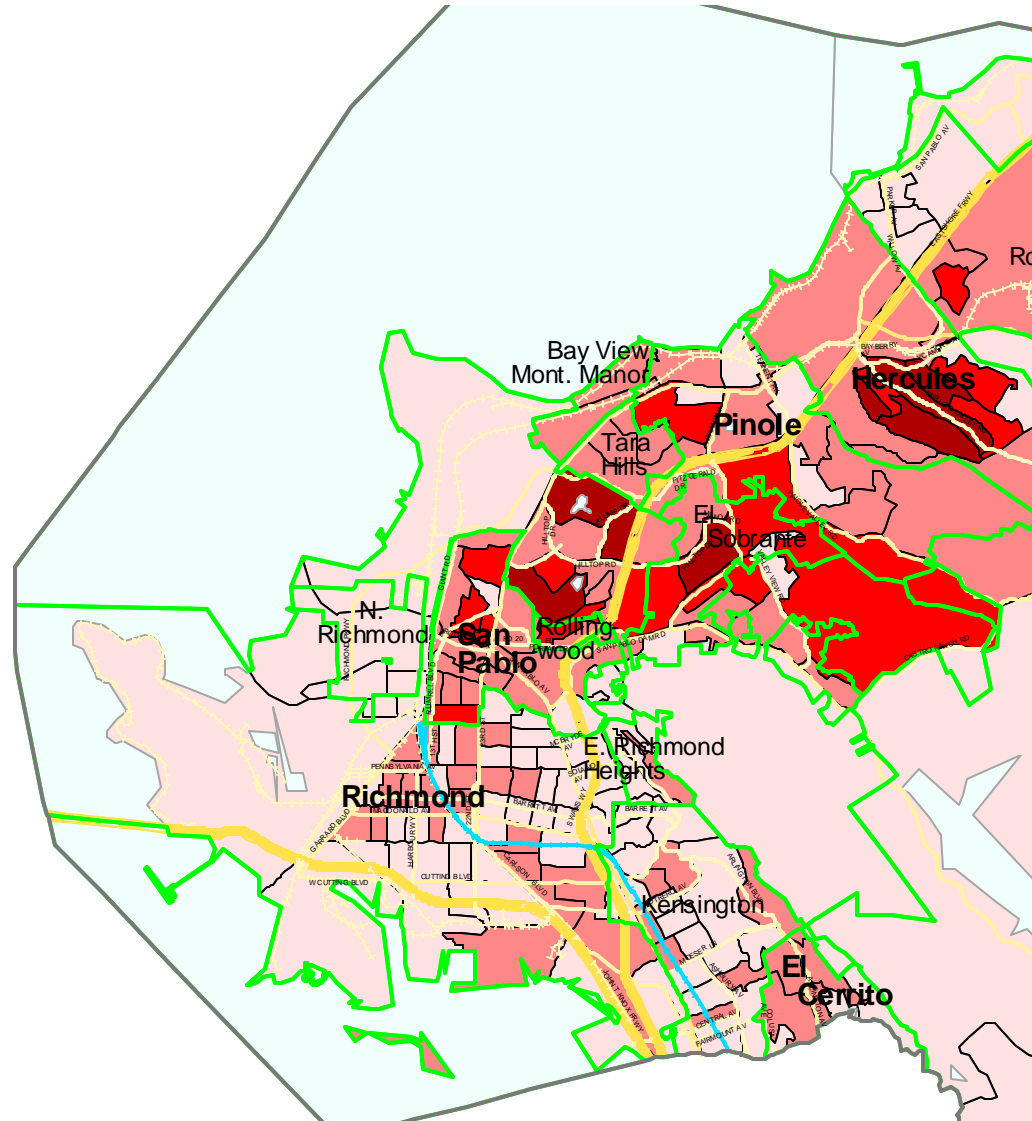


Safe Communities Project: Neighborhood Selection

Number of Incidents Per Capita

Number of Incidents Un-Adjusted Counts

Number of Incidents Adjusted for Area



Incidents Per Capita 1995 - 2000

9.8 - 81
81 - 140.88
140.88 - 257.6
257.6 - 527.8
527.8 - 1230.5

Incidents 1995 - 2000

1 - 19
20 - 56
57 - 125
126 - 275
276 - 544

Incidents 1995 - 2000 Ratio

0.001 - 0.236
0.236 - 0.685
0.685 - 1.341
1.341 - 2.654
2.654 - 5.127

LEGEND

Transportation Network



Aggregations are Census Blocks



Data Sources and Definitions

Incident Data Provided by CHP and the Contra Costa County Health Services Department and is dated 1995-2000

Incidents are defined as motor vehicle collisions with other motor vehicles, pedestrians, bicycles, and stationary objects.

Senior Housing Information Provided by the Contra Costa Office on Aging

School Locations are from Thomas Brothers GIS files

Census geography is from the US Census Bureau.



Prepared for the Health Services Department and The Safe Communities Project by the Community Development Department

2 0 2 4 Miles

This map contains copyrighted information. Reproducing all or any portion of this map is an infringement of copyright law. Users of this map agree to read and accept County of Contra Costa disclaimer of liability and warranties provided herewith. This map was created by the Community Development Department.



Map Created on 7/18/01
Contra Costa County Community Development
651 Pine Street, 4th Floor - N. Wing
Martinez, CA 94553-0095
37:59:48.45N 122:06:35.384W